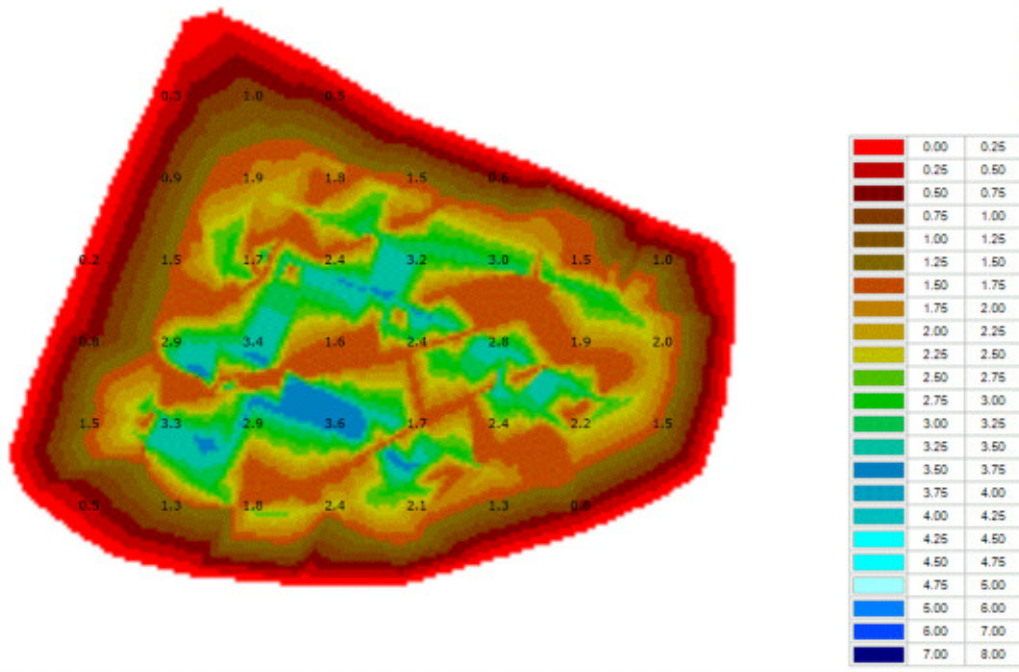


SCOUT

Hydro Profiling For Wastewater Lagoons and Any Pond or Lake



Polishing lagoon of a 2 cell 25 year old facultative wastewater lagoon system for a small town in the US. Design depth and depth at the time of survey 5' deep. Measurements shown on the profile depict the amount of water above the measured top of the sludge in the lagoon.

- ⊙ **Color enhanced hydrographic picture**
- ⊙ **GPS/GONASS data positioning detail**
- ⊙ **Visual and digital data supplied**
- ⊙ **Sludge volume supplied**
- ⊙ **Volume of water supplied**
- ⊙ **3-D view available for curious images**

The Reliant Water Technologies **SCOUT Hydro Profiling System** is the answer to obtaining clear and concise shallow water survey data quickly and inexpensively. By not only providing a visual hydrographic 'picture' of everything underwater, in any shallow body of water, the **SCOUT** also provides the volume of sludge in the water body (as well as the volume of free water). The 'picture' provided is color enhanced in order to provide clear, definitive delineation of variable depths of sludge, or debris, and includes multi-point water depth over-lays.

The **SCOUT** sonar hydrographic survey is obtained quickly onsite, often in less than an hour, and the profile can be supplied within days. 3-D views can be supplied where curious underwater images are found. The same technology used for deep sea exploration by the U.S. Navy and under sea exploration companies is utilized. All high quality profiles utilize the latest in GPS (Global Positioning System) and GLONASS (Global Navigational Satellite System) data to provide the exact positioning of all the profile data supplied.

Data Acquisition Specifications and Limitations

Environmental: Operating water temperature - -5°C to 50°C (23°F to 122°F)
Safe boating conditions

Power required: None

Boat: Required

Depth Range: .3 to 200 meters (1 to 650 feet)

Depth Resolution: 7.5 cm (3 inches)

Nationwide Profiling Services Available

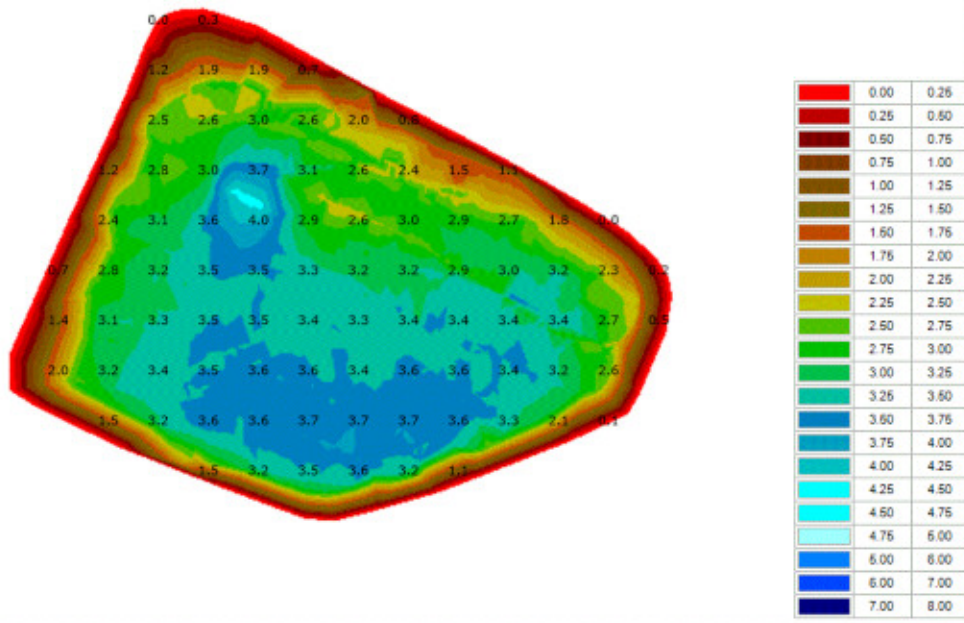


Reliant Water profiling crew with hydrologic scanning equipment and boat

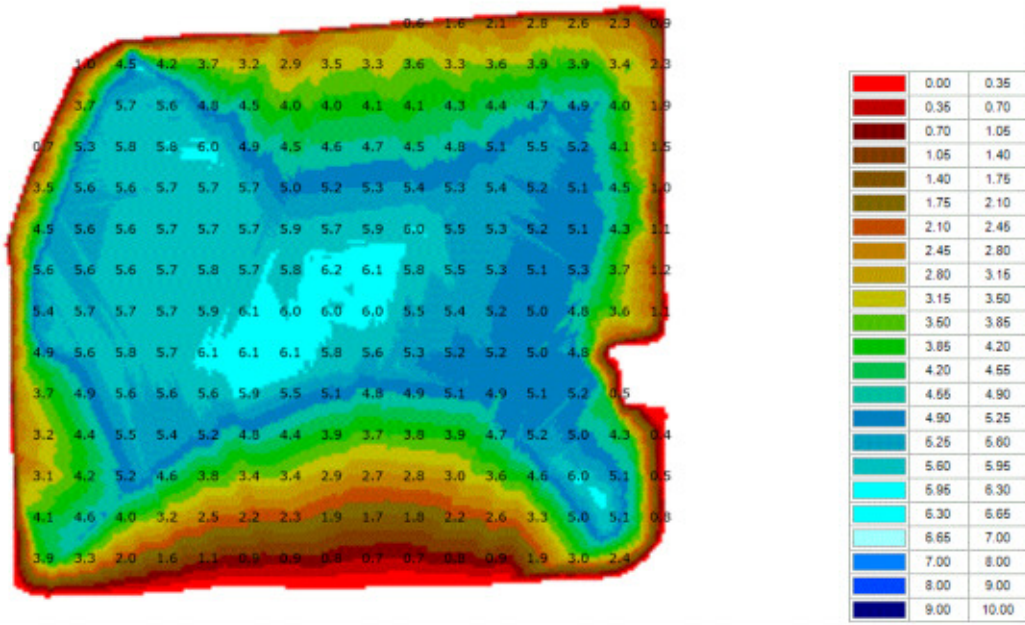
States within a 1 day drive of New Orleans, LA can be serviced by a profiling specialist with all necessary equipment including a company boat.

All hydrologic profiling equipment is portable and can be carried on a plane for areas outside of driving range. The only responsibility of the customer will be supplying a small boat within which the technician can perform the quick raw data collection.

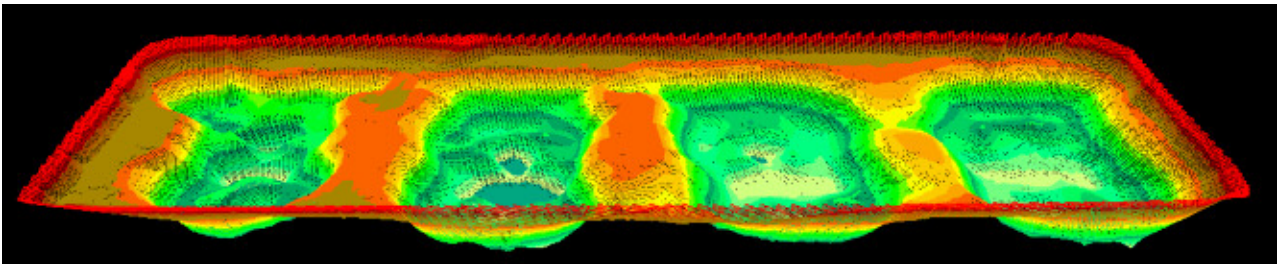
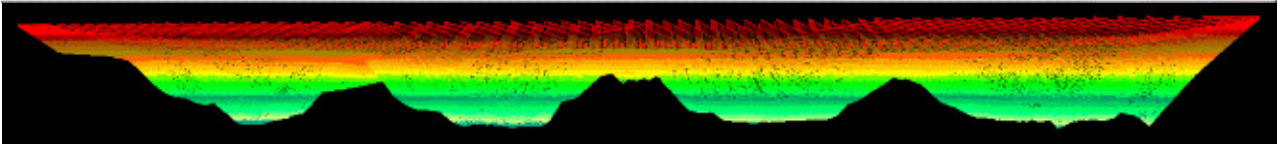
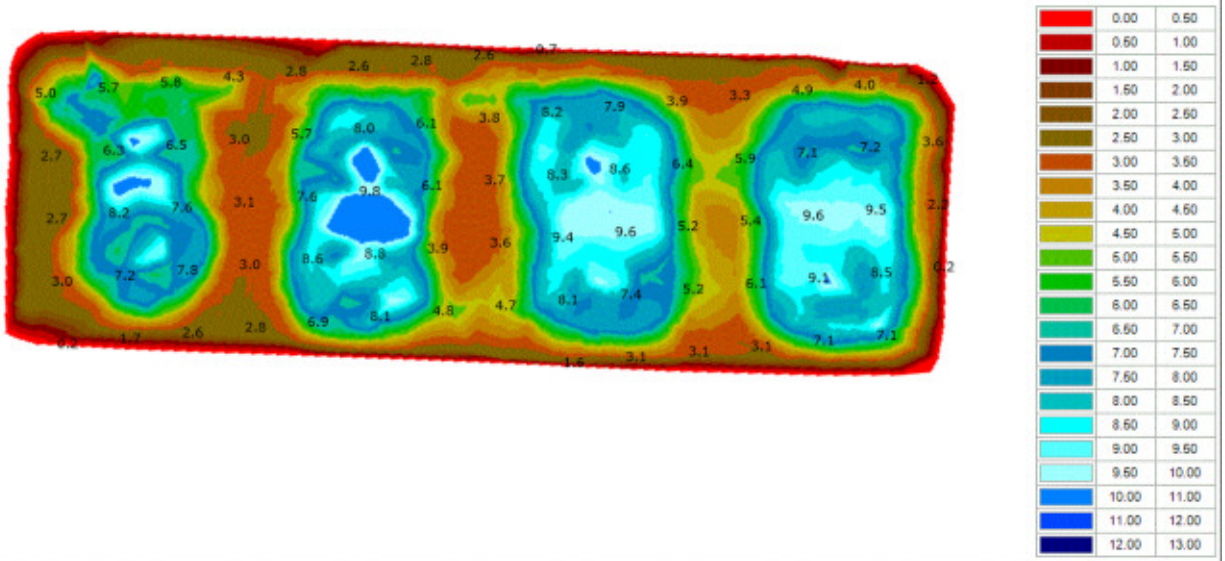
Final report includes a colored digitized profile with all digital data included. Sludge volume and water volumes will also be provided.



1.5 acre facultative wastewater lagoon, with a 5' depth. Scout profile exhibiting color delineations based on the color and depth scale on the right. Measurements shown on the profile depict the amount of water above the measured top of the sludge in the lagoon



A seven acre wastewater polishing lagoon, with a 7' water depth. Scout profile exhibiting sludge delineations based on the color and depth scale on the right. Measurements shown on the profile depict the amount of water above the measured top of the sludge in the lagoon



A three acre wastewater lagoon, with a 10' design depth. Top Scout profile exhibiting color delineations based on the color and depth scale. Measurements shown on the profile depict the amount of water above the measured top of the sludge in the lagoon. Sludge parapets built by the use of large surface aerators. Center 3-D provides a complete 90° perspective that clearly shows the depth of the sludge buildup areas. The bottom 45° 3-D view illustrates another perspective of the sludge buildup in the lagoon.

RELIANT

Water Technologies

141 Robert E. Lee Blvd. - #284

New Orleans, LA 70124

Tel 504-400-1239

FAX 504-242-8887

sales@reliantwater.us.com

www.reliantwater.us.com

Represented by -